

2. Here is a square pizza with an area of 36 square inches.

(a) What length of stuffed crust will be around the edge?

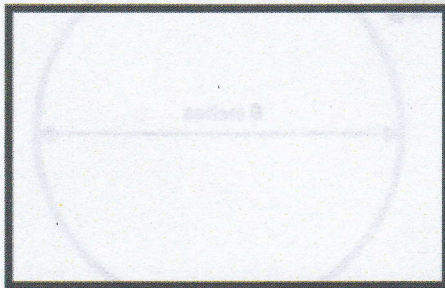
_____ inches

36 square
inches

(b) Design two rectangular pizzas, each with an area of 36 square inches, with different perimeters, so that Robbie will have more crust than on the square pizza.

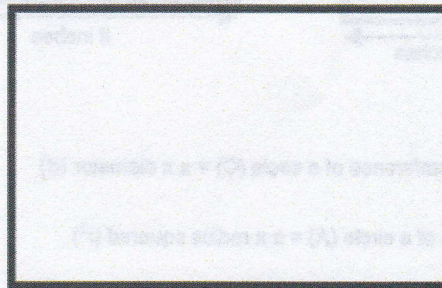
In each case calculate what the perimeter will be.

Pizza 1



Perimeter of Pizza 1 _____ inches

Pizza 2



Perimeter of Pizza 2 _____ inches

3. What is the circumference of a round pizza with an area of 36 square inches?

_____ inches

Explain how you figured this out.

8